



**Hanworth Road, Hounslow, TW3 3TY**

**£99,950**

**CASH BUYERS ONLY!** A first floor studio apartments situated within walking distance to Hounslow Town Centre, Hounslow mainland station and bus routes. The accommodation comprises studio room, kitchen/breakfast room and shower room. The property is in need of modernisation and is offered for sale with no forward chain!

A partner of  
**The Guild Of Professional Estate Agents**  
with a network of over 700 independent estate agents

Associated Office: 121 Park Lane, Mayfair, London W1K 7AG t 020 7318 7075

**Communal Entrance**

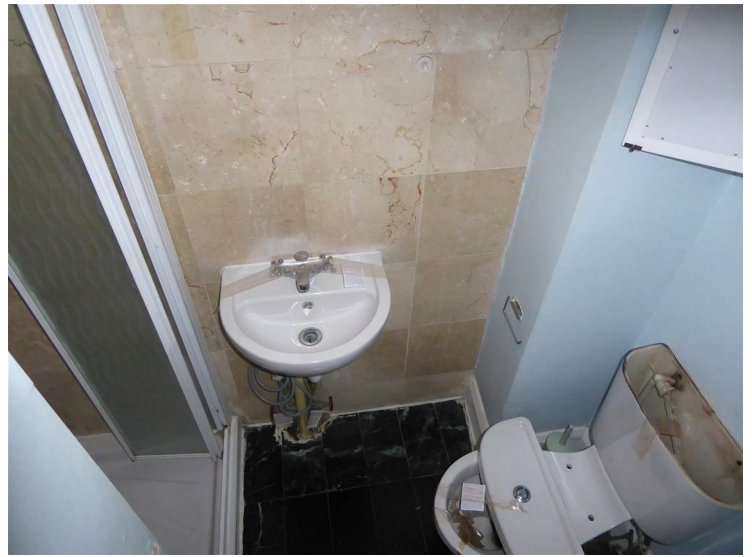
Stairs to first floor, front door.

**Studio Room**

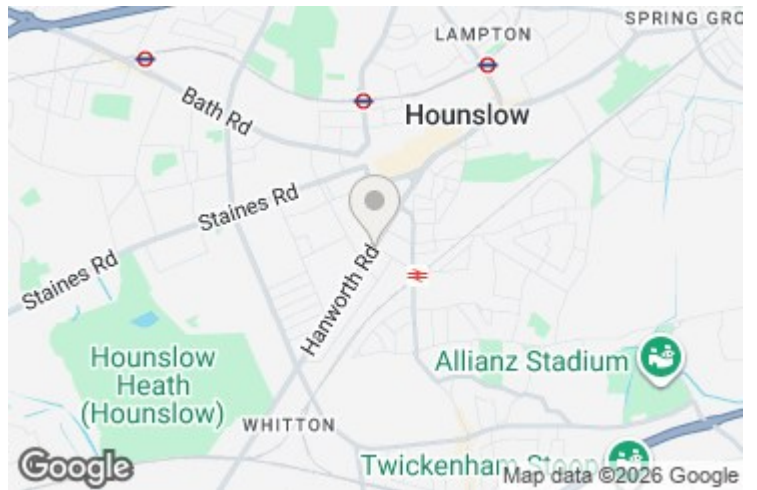
Rear aspect double glazed window.

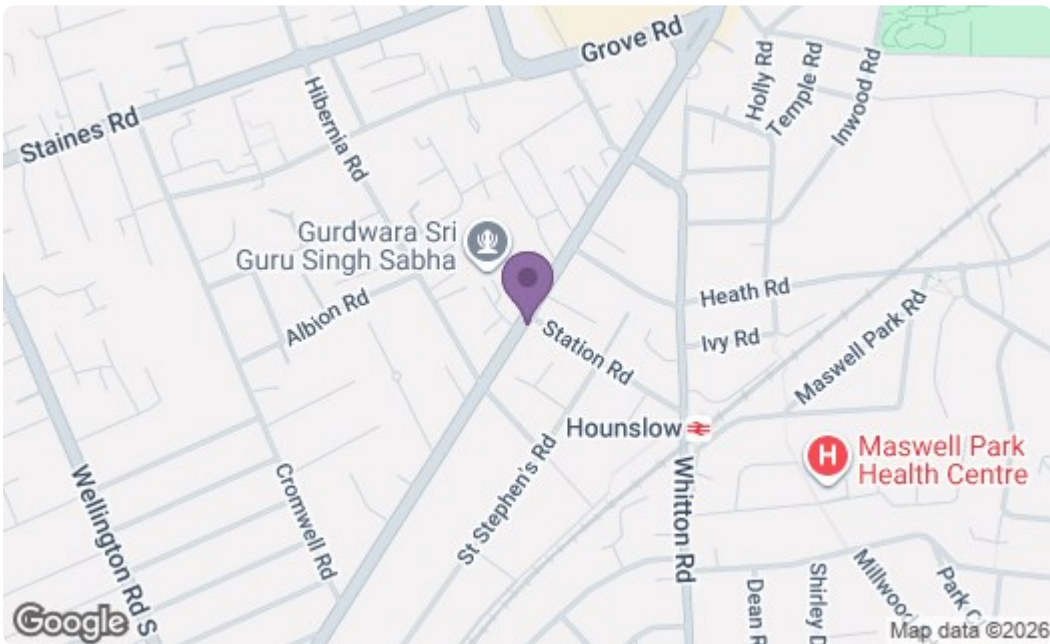
**Kitchen**



Stainless steel single drainer sink unit with mixer tap and cupboard below, built-in hob and oven, double glazed windows.

**Shower Room**

Shower cubicle, wash hand basin, low level w/c.





Energy Efficiency Rating		Current	Potential
Very energy efficient - lower running costs			
(92 plus) <b>A</b>			
(81-91) <b>B</b>			
(69-80) <b>C</b>			
(55-68) <b>D</b>			
(39-54) <b>E</b>		55	
(21-38) <b>F</b>			
(1-20) <b>G</b>			
Not energy efficient - higher running costs			
<b>England &amp; Wales</b>		EU Directive 2002/91/EC 	
Environmental Impact (CO <sub>2</sub> ) Rating		Current	Potential
Very environmentally friendly - lower CO <sub>2</sub> emissions			
(92 plus) <b>A</b>			
(81-91) <b>B</b>			
(69-80) <b>C</b>			
(55-68) <b>D</b>			
(39-54) <b>E</b>			
(21-38) <b>F</b>			
(1-20) <b>G</b>			
Not environmentally friendly - higher CO <sub>2</sub> emissions			
<b>England &amp; Wales</b>		EU Directive 2002/91/EC 	

A partner of  
**The Guild Of Professional Estate Agents**  
 with a network of over 700 independent estate agents

Associated Office: 121 Park Lane, Mayfair, London W1K 7AG t 020 7318 7075